

Essex County Environmental Center

Spring 2010

Public Programs



The Essex County Environmental Center is located at 621-B Eagle Rock Avenue in Roseland and is a facility of the Essex County Park System in Essex County West Essex Park. Our hours of operation are Monday through Friday from 9:00am to 5:00pm and Saturday from 10:00am to 2:00pm. Essex County West Essex Park is open to the public every day from dawn until dusk. Pre-registration is required for all programs unless otherwise noted. For more information, please call 973-228-8776.

ONGOING CLUBS AND ACTIVITIES



LITTLE EXPLORERS SPRING NATURE PROGRAM

Mondays – March 1 through May 24

Thursdays – March 4 through May 27

10:30-11:30am for ages 2½ to 3 ½ years

10-11am for ages 2½ to 3 ½ years

1 to 2pm OR 3 to 4pm for ages 3 ½ to 5 years

This child-caregiver class uses stories, walks and crafts to develop an awareness and appreciation for science and nature for the child as well as the caregiver. Each week, a different nature or science topic is covered. Space is limited. Advance registration and payment required; call 973.228.8776. **Fee: \$6 per child per session. (Additional material fees may apply)**

BUG CLUB

Tuesdays – March 9, April 13, May 11

For children ages 6 to 10. The Bug Club is devoted to young people who want to explore the wonders of insects through field walks, games, stories and crafts. This club meets year-round. Space is limited. Advance registration and payment required; call 973.228.8776.

Fee: \$6 per child per session (Additional material fees may apply)

4pm to 5pm



ROCK-N-ROLL GEOLOGY CLUB

Tuesdays – March 30, April 27, May 25

For children ages 7 to 12. Revel in the fascinating formations of Earth's geologic creations. Hands-on club activities include exploring local geology, discovering what's in local soil, and identifying rocks and minerals. Space is limited. Advance registration and payment required; call 973.228.8776. **Fee: \$6 per child per session. (Additional material fees may apply)**

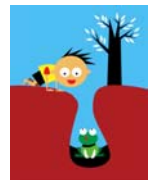
4pm to 5pm

GREEN KIDS CLUB

Tuesdays – March 16, April 20, May 18

For children ages 7 to 14. Discover all areas of environmental science with hands-on fun and service projects! Space is limited. Advance registration and payment required; call 973.228.8776. **Fee: \$6 per child per session (Additional material fees may apply)**

4pm to 5pm



GREEN THUMB CLUB-GARDENING FOR HEALTH AND NUTRITION

Wednesdays – March 10 & 24, April 7 & 21, May 5 & 19

For children ages 7 to 12. Participants will learn how to garden for optimal plant growth, production and food quality as well as learn gardening methods that keep the soil and land healthy. Each class provides self-contained concepts, so you may choose individual sessions or join us for the entire 6-month club which provides a complete health and nutrition program for the young gardener. Advance registration and payment required; call 973.228.8776. **Fee: \$8 per child per session (includes a \$2 materials fee)**

3:45pm to 4:45pm

PUTTING ESSEX COUNTY FIRST

ONGOING CLUBS AND ACTIVITIES

NEW! OUTDOOR ADVENTURE CLUB

Wednesdays – March 31, April 28, May 26

4pm to 5pm

For children ages 7 to 11. Let's get outside and see where the hour takes us. We just might build forts, collect firewood, skip rocks, tell stories, dig for critters, spot wildlife, play tag and more. Leaving our structured routines behind, let's blow like the wind. The hour will be directed by club members under the guidance of a Staff Naturalist who will facilitate all free-play activities. *Dress for the weather as all classes will be outside.* Advance registration and payment required; call 973.228.8776. **Fee: \$6 per child per session**



NEW! OUTSIDE NATURE DISCOVERIES

Mondays – March 15 & 29, April 12 & 26, May 10 & 24

4pm to 5pm

For children ages 5 to 6. Come venture into our wooded wetland with magnifiers, trowels, containers and more to observe living things in their environment. Curriculum is not structured, we will discover as we explore and document our observations in a journal. *Dress for the weather as all classes will be outside.* Advance registration and payment required; call 973.228.8776. **Fee: \$6 per child per session**

4-H ENVIRONMENTAL KIDS CLUB

Thursdays – March 11, April 15, May 13

4pm to 5pm

For children in grades 2nd through 5th. Our environment is filled with things, big and small, that surprise and help us. Join us once a month to see how much fun it is to learn about our world! Meet in Garibaldi Hall. Advance registration required; call 973.228.3785.



4-H PET CLUB For children in grades 4-6

Wednesdays – March 10, April 14, May 12 from 4pm to 5pm

CLOVER PET CLUB For Children in grades K-2

Saturdays – March 13, April 10, May 15 from 10:30am to 11:30am

Do you love animals and want to learn how to take care of them? If so, then the Pet Club is for you. We will learn all about pets and small animals. Non-pet owners are welcome! 4-H Pet Club meet in Garibaldi Hall, Clover Pet Club meets in the Environmental Center. Advance registration required; please call 973.228.3785.

4-H STAMP CLUB

Thursdays – March 18, April 22, May 20

4pm to 5pm

For children in grades 4th through 7th. What do Pocahontas, Dr. Martin Luther King, Jr., and Rachel Carson have in common? They have all been honored on US Postal Stamps. Stamps have been moving mail around since the middle of the 19th century! Start a collection today. Meet in Garibaldi Hall. Advance registration required; please call 973.228.3785.



4-H YOUNG GARDENERS CLUB

Tuesdays – March 23, April 13, May 11

4pm to 5pm

For children in grades 1-8. Have you ever wondered how vegetables and flowers grow? Where spaghetti sauce comes from? How you can find a rainbow in a garden? Come join the Young Gardener's 4-H Club to find the answers to these questions and many more. Learning and fun happen all the time here! Meet in Garibaldi Hall. Advance registration required; please call 973.228.3785.

HORTICULTURE FOR SENIORS

Mondays – March 22, April 19, May 17

1pm to 3pm

Join the Master Gardeners of Essex County for an afternoon of garden crafts. Each program date offers a different craft to include designing a terrarium for your home, learning about plant propagation, and making a container garden for yourself or a friend. Meet in Garibaldi Hall. Advance registration required; please call 973.731.0717. **FREE**



NJ AUDUBON

ESSEX COUNTY WONDER WALKS



NEW! By popular demand we are now offering “Wonder Walks” for children ages 18 months to 5 years who are accompanied by their caregivers. Children should either be walking or in a carrier. Strollers are not recommended. **Advanced registration required.** Please call 973.226.6082 or email kelly.wenzel@njaudubon.org to register.

ESSEX COUNTY SOUTH MOUNTAIN RESERVATION

Tuesday, March 9

10am to 11:15am

Bundle up and explore the forest to find early signs of spring! Discover how trees “wake up,” look for animal homes and listen for early spring birds. Meet at Tulip Springs Parking Area. **Fee per child: \$5 members, \$7 non-members**

ESSEX COUNTY BRANCH BROOK PARK

Tuesday, April 13

10am to 11:15am

Enjoy the gem of the Essex County Park System with your child(ren). Explore hidden habitats and walk among the beautiful cherry blossoms to find wildlife waking up after their winter slumber. Meet at the Essex County Cherry Blossom Visitor’s Center. **Fee per child: \$5 members, \$7 non-members**

ESSEX COUNTY VERONA PARK

Tuesday, May 11

10am to 11:15am

Instead of playing on the swings and equipment, give Nature’s Playground a try! Explore the natural areas of Essex County Verona Park to look for wildflowers, birds, and even aquatic critters! Meet at the sundial in the Garden Eden Children’s Garden. **Fee per child: \$5 members, \$7 non-members**

NJ AUDUBON

ESSEX COUNTY BIRDING FIELD TRIPS

Led By Dave Hall, Associate Naturalist



*Spring field trips offer the opportunity to see species of birds that are passing through New Jersey: those that are on their way to breeding territories further north and migrants that are returning to the state to nest. The trips also offer a chance to learn the territorial songs and behavior of birds that are residents all year long. This is a wonderful time of year to visit the Essex County parks. **Advance registration required; please call 973.226.6082 or email kelly.wenzel@njaudubon.org to register.***

THURSDAY MORNING FIELD TRIPS

ESSEX COUNTY SOUTH MOUNTAIN RESERVATION

Thursday, March 11

8:30am to 11:30am

We will hike several trails in search of winter birds and early signs of spring. Target species include Black Vulture, Pileated Woodpecker and many forest birds. Meet at the parking lot of the Essex County Turtle Back Zoo. **Fee: \$6 members, \$8 non-members**

NJ AUDUBON

ESSEX COUNTY BIRDING FIELD TRIPS

ESSEX COUNTY VERONA PARK

Thursday, April 8

8:30am to 10:30am

Take an easy walk around the pond, looking for signs of early spring migrants. Meet at the south side of the Boathouse. **FREE**

HATFIELD SWAMP

Thursday, April 22

8:30am to 11am

Early spring migrants may include both passerines and raptors. If conditions are right, we may also encounter hundreds of waterfowl. Footing may be wet. Meet at King's supermarket parking lot in West Caldwell. **FREE**

GREAT PIECE MEADOWS

Thursday, May 6

8am to 11am

There will be many chances to encounter meadowland birds of spring including herons, sandpipers, swallows, sparrows, and much more. Footing may be wet. Meet at the parking lot of Charlie Brown's Restaurant in Fairfield (337 Fairfield Road, near Route 46). **Fee: \$6 members, \$8 non-members**

ESSEX COUNTY BECKER FARM AND DINOSAUR PARK

Thursday, May 20

8am to 11am

Enjoy beautiful vistas of the Passaic River Valley and discover spring migrants in all their glory, including warblers in full song. Meet at the Essex County Environmental Center in Roseland. **Fee: \$6 members, \$8 non-members**

THURSDAY EVENING FIELD TRIPS

EVENING WOODCOCK WALK

Thursday, March 18

7pm to 9pm

We will take a short hike at a nearby county park to look for these secretive spring migrants and their strange mating flights. Dress warmly and bring a flashlight and sturdy shoes, as we may encounter wet conditions. Meet at the Essex County Environmental Center. **FREE**

SATURDAY MORNING FIELD TRIPS

CANOE BROOK RESERVOIR

Saturday, March 20

8am to 11am

A special trip only available twice a year, the Canoe Brook Reservoir is a wonderful staging area for ducks and geese on their way north. This is also an excellent place for raptors. **REGISTRATION REQUIRED.** **Fee: \$6 members, \$8 non-members**

ESSEX COUNTY SOUTH MOUNTAIN RESERVATION

Saturday, April 24

8:30am to 12pm

We will hike several trails in search of early signs of spring. Target species include early spring migrants and the last of the winter sparrows. Meet at the parking lot of the Essex County Turtle Back Zoo. **Fee: \$6 members, \$8 non-members**

HATFIELD SWAMP

Saturday, May 29

8am to 11am

Late spring migrants may include both passerines and raptors, including warblers in full song. Footing may be wet. Meet at King's supermarket parking lot in West Caldwell. **Fee: \$6 members, \$8 non-members**

MARCH 2010 PROGRAMS

PHOTOGRAPHS OF THE GREAT SWAMP REFUGE

Wednesday, March 3

7pm to 9pm



This presentation will be given by Sherb Naulty, a professional photographer known for his intimate images and knowledge of the Great Swamp Refuge, a natural headwater of the Passaic River. Sherb is well known for his photographs of New Jersey, especially the Skylands area, and has been photographing the Great Swamp in all seasons and weather for many years. **Fee: \$8 per adult; Free for ECNP members**

UKRAINIAN BEESWAX EGGS

Wednesday, March 3

6:30pm to 8:30pm



Discover the world of beeswax art by learning how to make Ukrainian Eggs. Using wax and dye in a method called batik, you will create a unique springtime decoration of your own to take home. Workshop fee includes all materials. Advance registration required; call 973.228.8776. **Fee: \$20 per adult**

4-H PUBLIC SPEAKING

Thursday, March 4

4:30pm to 6:30pm



For children ages 8 and up. Did you know that 75% of people are afraid to speak in public? In this interactive 4-H Youth Development Program, young people will learn how to optimize their presentation potential. This workshop includes speech organization, presentation, and individualized coaching. Meet in Garibaldi Hall. Advance registration required; call 973.353.1338. **Fee: \$10 per person, free for 4-H members**

HANDS-ON COMPOSTING

Saturdays – March 6, April 10, May 16

10am to 1pm



Take "going green" to a whole new level and learn how to compost. In this hands-on workshop with Rutgers Cooperative Research and Extension, learn the basics of home composting. Fee includes manual and supplies. Advance registration required; call 973.228.8776. Same class repeats each month. **Fee: \$8 per adult**

NATIVE PLANTS FOR YOUR GARDEN

Tuesday, March 9

7pm to 9pm

Never buy exotic plants again! Attract butterflies, birds and beneficial insects to your native garden with hardy flowers, shrubs and trees that belong here. Let Dennis Miranda, Executive Director of the Rahway River Association, explain the advantages of restoring our natural landscape in your own backyard! This program is sponsored by the West Essex Park Conservancy and the Essex Sierra Club Singles Group. **Fee: \$8 per adult; Free for WEPC/Sierra Club members**



PROJECT LEARNING TREE WORKSHOP – Literacy in the Urban Environment

Wednesday, March 10

9am to 3pm

Teachers are invited to join us for this exciting FREE hands-on workshop that encourages investigations in urban environments while fostering collaborative learning, decision-making skills and literacy. Discover current environmental issues in New Jersey, lessons to connect your students with the world around them, and opportunities for service learning. Each participant will receive the Project Learning PreK-8 Activity Guide. Advance registration required; call 973.228.8776. **FREE**

PASSAIC RIVER POSTER CONTEST



All entries must be received by Friday, March 12 by 5pm. Not everyone is aware that the Passaic River has a long and vibrant history in Essex County, offering Native Americans, European settlers and modern industry all of the necessities to thrive. To promote awareness of the Passaic River and the great strides that have been made to improve and preserve its natural history, the Essex County Environmental Center and its partner agencies are sponsoring a poster contest for 6th grade Essex County students. Please call the Center for details at 973.228.8776.

MARCH 2010 PROGRAMS

NJ AUDUBON FAMILY PROGRAM - MAPLE SUGARING FUN

Saturday, March 13

10:30am to 12pm

Our walk will find us searching for Sugar Maple trees. We will "tap" a maple tree, collect some sap, and make some Maple Syrup. We'll return to the center for hot chocolate and sugar snacks. Appropriate for children in grades K-5. Advance registration required; call 973.226.6082. **Fee: \$5 members, \$7 non-members**



WORLD WATER DAY



Saturday, March 20

12pm to 1:30pm

Got H₂O? Learn about Earth's most precious resource, WATER, and have fun playing water games and having hands-on fun! Advance registration required; call 973.228.8776. **Fee: \$6 per child, \$8 per adult**

INTRODUCTION TO VEGETABLE GARDENING FOR FAMILIES

Saturday, March 20

12:00pm to 1:30pm

Bring the kids and get ready to learn all about vegetables you can grow in your garden. Kids will learn about different vegetables and how they grow. You will leave with a general knowledge of how to plant your own garden as well as a pack of vegetable plants and a package of seeds. Meet in Garibaldi Hall. Advance registration required; call 973.228.8776. **Fee: \$6 per child, \$8 per adult; \$7 material fee per family/person**



NEW JERSEY WOODTURNERS

Mondays – March 22, April 26, May 24

7pm to 10pm

Learn to turn with the NJ Woodturners Association! Discover the wonders of creating art from found pieces of wood, wood species, and turning tips and techniques. Topics vary month to month; call the Environmental Center for details. Meet in Garibaldi Hall. **Fee: \$8 per adult; Free for NJWA members**



BEGINNER KNITTING LESSONS



Tuesdays, March 23 & 30

6pm to 8:30pm

Appropriate for ages 13 and up. You will receive instruction, from Jane and Maggie Murphy of Cool Green Fibers, in casting on, knit and purl stitches (the basic stitches for all knitting), and binding off. After completion of both classes, you will have the ability and materials needed to complete your very own hand-knitted scarf. Advance registration required; call 973.228.8776. **Fee: \$75 per person (includes both classes and all necessary materials)**

GEESEPEACE TRAINING SESSIONS

Wednesday, March 24

9am to 11am OR 7pm to 9pm

This workshop is free and open to the public, particularly targeted to assist municipalities and property owners in their geese management efforts. GeesePeace staff will be training volunteers, public works and recreational personnel on how to addle goose-eggs, thereby eliminating new births in the flocks.

Free



GROW YOUR OWN SALAD

Wednesday, March 24

7pm to 8:30pm

Join Rutgers Master Gardeners of Essex County as they introduce the basics of creating a small vegetable/salad garden. Harvest your own tomatoes, lettuce and cucumbers this year to enjoy with your family and friends. Participants will be given an heirloom tomato plant to begin their salad garden. Meet in Garibaldi Hall. Advance registration required; call 973.228.8776. **Fee: \$6 per child, \$8 per adult**

APRIL 2010 PROGRAMS

SPRING BREAK NATURE CAMP

Monday, April 5 to Wednesday, April 7

12:30pm to 4:30pm

Have a Spring Break Getaway right here at the Environmental Center! Enjoy a day of exploring and discovering habitats, butterflies, bees, birds and Native American life. Sign up for each day or all three.

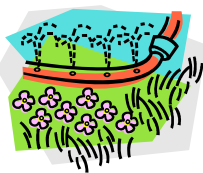
Appropriate for children in grades 3-5. Advance registration and payment required; call 973.228.8776. **Fee: \$40 per day or \$100 for all three days**



GARDENING 101: Three-part series

Mondays – April 5, 12, & 19

7pm to 9pm



Join Kathleen Salisbury, Essex County Parks Department Horticulturist and President of the NJ Native Plant Society, for a three-part series on gardening basics. If you are not sure of the difference between a perennial and an annual and are confused about hardiness zones, when to plant bulbs and just how to prune those overgrown shrubs, this course is for you. Kathy will discuss proper planting and pruning techniques, plant selection, soil preparation and amendments, and how to avoid common landscaping mistakes. Class size is limited. Pre-registration required; sign-up for one or all classes. **Fee: \$8 per class or \$20 for all three classes.**



BAKER'S DELIGHT

Tuesday, April 6

5:30pm to 7:30pm

For children ages 7 to 12. In this 4-H Youth Development Program, novice bakers will learn about reading recipes, basic steps in baking, how to measure ingredients, and have baking to take home. Meet in Garibaldi Hall. Advance registration required; call 973.353.1338. **Fee: \$15 per person**

NOT ALL ARCHES LEAD TO MCDONALD'S

Tuesday, April 6

7pm to 9pm



Join Frederick Dammont, an award-winning amateur photographer, for a slide-show presentation on Arches National Park. This show highlights the powers of erosion by water, wind, and changes in temperature which carved this ancient sea bottom into a spectacular array of arches, bridges, and sky-high columns. Come enjoy the scenery or participate with comments, questions, and/or observations. Photographs will be on display in the Environmental Center through the month of April. **Fee: \$8 per adult.**

IMAGES OF THE DELAWARE WATER GAP RECREATIONAL AREA

Wednesday, April 7

7pm to 9pm

Anita Ray and Gordon Emrich will present their combined images of the "Delaware Water Gap Recreational Area." This show has been presented to the Friends of the DWGRA and was received enthusiastically. Anita is a regular exhibitor at the Artery Gallery in Milford, Pa., an accomplished underwater photographer and the recipient of many awards and ribbons for her photography. She lives in the DWGRA area. Gordon is known for his waterfall photography. **Fee: \$8 per adult; Free for ECNP members**



GROWING GREEN ON YOUR SIDE OF THE FENCE

Wednesday, April 7

7pm to 8:30pm



Early spring is the time to get outside with simple steps to ensure a green healthy lawn! Learn from the experts at Rutgers Cooperative Extension (RCE) about how to have your best lawn this year. Find out what NJ lawns consist of and how to properly care for and feed your lawn during the spring and summer season. RCE staff and the Master Gardeners of Essex County will teach you how to rejuvenate your lawn or establish a healthy vibrant lawn. Rutgers soil test kits will be available for purchase (\$15.00). Meet in Garibaldi Hall. Advance registration required; call 973.228.8776 **Fee: \$6 per child, \$8 per adult**

5th ANNUAL EARTH DAY CELEBRATION

Saturday, April 17

11am to 4pm

Join the Essex County Environmental Center and its Partner Agencies for a fun-filled day of "Getting Back to Nature!" Enjoy our Green Vendor tent, canoeing, hikes, beekeeping demonstrations, 4-H Club Fair, refreshments and much more! **FREE**



APRIL 2010 PROGRAMS

DO OTHER ANIMALS SENSE THE WORLD THE WAY WE DO?

Saturday, April 24

11am to 12pm

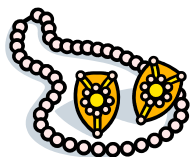


For children 8 years and older. We perceive our world through our senses as do other animals. Does that mean all of us live in the same identical reality? Not really. In this presentation, animals will be shown to have senses that can perceive a greater range of sight and sound than we can. In addition, some animals have senses totally unique to our own. Perception is a fun topic full of surprises. Meet in Garibaldi Hall. Advance registration required; call 973.228.8776. **Fee: \$6 per child, \$8 per adult**

BEAD STRINGING WORKSHOP

Wednesday, April 28

7pm to 9pm



Explore your creativity with our host Timeless Treasures Bead Shoppe of Montclair. You will learn how to design a beautiful necklace with cultured freshwater pearls from the sea and gemstone beads of the earth. You will be taught basic techniques to create your necklace professionally from beginning to end. Tools are available on loan for free during class or for purchase. *If you wear glasses, please bring them as you will be working with small parts.* Class size is limited. *For class to run, pre-registration and payment is required two weeks prior to program date;* call 973.228.8776. **Fee: \$45 (includes material fees and your take-home creation)**

MAY 2010 PROGRAMS

CELEBRATE ARBOR DAY

Saturday, May 1

11am to 1:30pm

As Arbor Day is scheduled across the country, the Essex County Environmental Center invites you to join our local recognition of the TREE – a most significant natural resource. Take our “Walk in the Woods” to discover a series of education stations, each with hands-on activities for families. The program is ongoing throughout the day. Participants will receive a baby tree to plant at home. Advance registration required; call 973.228.8776. **Fee: \$6 per child, \$8 per adult**



ESSEX COUNTY ENVIRONMENTAL CENTER / SMART LITTLE HOUSE BOOK SWAP

Saturday, May 1

10:30am to 1:30pm

Are your bookshelves overflowing with books that you've either already read or will never read? Here's a way to spread that knowledge while also receiving a voucher to shop for a new reading collection. This is a great opportunity to actively practice the 3R's! Bring all unwanted books to the Center today for drop off. All books will be sorted and on display for purchase (or voucher) on May 15th. *All proceeds will go to the Essex County Parks Foundation for environmental education programming and projects at the Essex County Environmental Center.*

BAD WEATHER PHOTOGRAPHY

Wednesday, May 5

7pm to 9pm

Arik Gorban, a fine arts photographer who specializes in nature photography, will present an educational program on bad weather photography. He will discuss the finer points of shooting in all kinds of bad weather. Arik exhibits in many art galleries throughout New Jersey and has received many awards for his photography. **Fee: \$8 per adult; Free for ECNP members**



NEW JERSEY
AUDUBON
www.nj.audubon.org

NJ AUDUBON FAMILY PROGRAM - MIGRATION MAYHEM

Saturday, May 8

10:30am to 12pm

May marks spring migration back to New Jersey for hundreds of species of birds. Take a walk through the woods to discover who has returned and have “An Eventful Journey” to learn how hard the trip can be. Appropriate for children in grades K-5. Advance registration required; call 973.226.6082. **Fee: \$5 members, \$7 non-members.**

MAY 2010 PROGRAMS

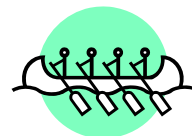
PASSAIC RIVER PADDLE RELAY

Saturday, May 8

8am to 12pm

An Essex County Parks Department co-sponsored event. Get your team together and enter this highly competitive canoe and kayak race on the Passaic River. Race against the Essex County team, which includes Essex County Executive Joseph N. DiVincenzo, Jr. To register for the paddle or for more information, contact Tom Pietrykoski at 973.817.5735. Paddle registration fee includes snack, T-shirt and insurance.

Fee: \$10 per person



ROCKIN' AND ROLLIN' ROLLER COASTERS

Tuesday, May 11

4:30pm to 6:30pm

Ages 7 to 12. Ever wonder how rollercoaster cars stay on the tracks? Kids will learn about building roller coasters for optimum speed and height, and will explore basic physics principles using roller coasters with slope, trajectory, curve and spiral in this 4-H program. Advance registration required; call 973.353.1338.

Fee: \$10 per person



THE FUTURE OF THE LENAPE AND LIBERTY WATER GAP TRAILS

Tuesday, May 11

7pm to 9pm

Please join us for an important meeting with Steve Marano, Director of the Liberty Water Gap Trail Committee, and Ed Goodell, Executive Director of the New York New Jersey Trail Conference, to discuss the future of New Jersey's two most unique trails. Now 30 years old, the Lenape is Essex County's premier greenway, linking together nearly all of Essex County's key parklands from Newark to Roseland. Revitalization of the Lenape is critical to completion of the LWGT, a 130-mile trail from Liberty State Park to the Delaware Water Gap. Both will require grassroots support. All are welcome, Essex County park conservancy members are encouraged to attend! **FREE**



ESSEX COUNTY ENVIRONMENTAL CENTER / SMART LITTLE HOUSE BOOK SWAP

Saturday, May 15

10:30am to 1:30pm

Love to read? New books can be pricy and resource intensive. Library books are free but are limited and have to go back fairly quickly. An alternative solution is to buy inexpensive used books that were collected from community members just two weeks ago! Books can be purchased with cash or by using a voucher you may have received on May 1st. *All proceeds will go to the Essex County Parks Foundation for environmental education programming and projects at the Essex County Environmental Center.*



SUNRISE PADDLE

Saturday, May 15

9:30am to 12pm

Paddle up the river and float down stream. The session includes paddling safety and techniques, and all equipment. It is geared for beginners and children 10 and up who are accompanied by a parent or guardian. Advance registration required; call 973.228.8776. **Fee: \$30 per canoe**



CRITTER COUNT

Saturday, May 22

10:30am to 1:30pm

Appropriate for grades three to six. All budding biologists, this is your chance to search our forest, pond and river to observe, identify, list and release as many different living species from bugs to birds as we can.

Advance registration required; call 973.228.8776. **Fee: \$6 per child, \$8 per adult**



CAMPFIRE COOKING

Friday, May 28

6pm to 8pm

Learn how to build a campfire for cooking and enjoy some simple food cooked over flames. This program is designed for parents who want to take their kids camping or scout leaders who cook with the whole troop. Advance registration required; call 973.228.8776. **Fee: \$10 per person**



FINE ART EXHIBITS ON DISPLAY

MARCH

SPECIAL EYES ON THE ENVIRONMENT (SEE)

Student Photography Exhibit

By Various Students from The Children's Institute of Verona, NJ

'MY PASSAIC RIVER' POSTER CONTEST

Essex County 6th grade student entries on display

Judging open to the public; please join us March 15-26

APRIL

NOT ALL THE ARCHES LEAD TO MCDONALD'S

Photographs of South-Western Utah

By Frederick Dammont

MAY:

NATURE PHOTOGRAPHERS' 4TH ANNUAL MEMBER EXHIBIT

By Various Members of the Essex County Nature Photographers Club

LOOKING AHEAD...



LENAPE DAY

Saturday, June 19

10:30am to 1:30pm

Join the Essex County Environmental Center to celebrate all things Native American at this participatory event. Family fun with native crafts, games, artifacts, stories, music, fire making and more. **Fee: \$6 per child, \$8 per adult**

SUMMER CAMP

July 5 to July 16, Grades Pre K and Kindergarten

1pm to 4pm

July 19 to July 30, Grades 1 and 2

1pm to 4pm

August 2 to August 13, Grades 3 and 4

1pm to 5pm

Enjoy exploring and discovering habitats for insects, birds, amphibians, the Passaic River, Lenape life and much more. Sign up for one or two weeks per grade range. Space is limited. Advance registration is required; call 973.228.8776.



To register or to inquire about Essex County Environmental Center programs, please call us at 973.228.8776. To register, or for more information about programs sponsored by our partner agencies, please refer to the contact list below and reach out to the agency directly. Thank you!

ESSEX COUNTY ENVIRONMENTAL CENTER PARTNER AGENCIES

New Jersey Audubon (NJA) - Kelly Wenzel 973.226.6082

Essex County Beekeepers Society (ECBS) - Joe Lelinho 973.403.8662

West Essex Park Conservancy (WEPC) - Ron Pate 973.669.8030

Essex County Nature Photographers (ECNP) - Gordon Emrich 973.239.0539

Master Gardeners of Essex County (MGEC) - Jan Zientek 973.228.3179

New Jersey Woodturners Association (NJWA) - Dr. Hitoshi Tanaka 908.889.5753

Essex County 4-H Youth Development Program (4-H)

Suzanne Mazur, Roseland Office 973.228.3785

Phillipa Myers, Newark Office 973.353.1338

The Essex County Environmental Center is situated in a wooded wetland habitat with access to the Passaic River which makes for an interesting and affordable site to book a naturalist-led field trip for school groups, scouts, and community groups. Book our state-of-the-art facility and nature setting for an educational birthday party, community event, or a corporate business outing. Take advantage of this County facility, stay local and explore the nature of Essex in your own "backyard." For more information call 973-228-8776. 621- B Eagle Rock Avenue, Roseland NJ, 07068.



In an effort to operate more sustainably, the Essex County Environmental Center will be phasing out its postal mailing and moving toward e-mail notices and alerts. Please fill out the tear-off questionnaire below and mail it back to let us know your preference, as we will continue to mail you a copy at your request. Otherwise, please provide an email address where we can send you our seasonal program schedule and other e-notices and alerts. You may also email your response to tcasella@parks.essexcountynj.org.

THANK YOU!

Name: _____

Address: _____

I prefer to continue to receive the Essex County Environmental Center brochure by US Postal mail:

YES NO

If no, my e-mail address and phone number are:



Our Environmental Center has become the premiere location for environmental education and nature appreciation. With the help of our partner groups, our dynamic schedule of events and activities will captivate all ages. Walk in our woods, discover habitats, get pointers on gardening, learn about nature photography and much more. It's all about nature and it's all at our Environmental Center.

Joseph N. DiVincenzo, Jr., Essex County Executive

ESSEX COUNTY BOARD OF CHOSEN FREEHOLDERS

Blonnie R. Watson, President, Freeholder-At-Large

Ralph R. Caputo, Vice President, District 5

Rufus I. Johnson, Freeholder-At-Large

Donald M. Payne, Jr., Freeholder-At-Large

Patricia Sebold, Freeholder-At-Large

Samuel L. Gonzalez, Freeholder District 1

D. Bilal Beasley, Freeholder District 2

Carol Y. Clark, Freeholder District 3

Linda Lordi Cavanaugh, Freeholder District 4



COUNTY OF ESSEX
Department of Parks, Recreation, and Cultural Affairs
ESSEX COUNTY ENVIRONMENTAL CENTER
 621-B Eagle Rock Avenue, Roseland, NJ 07068
 973.228.8776